



Working together to achieve the healthiest life  
possible for everyone in Ayrshire and Arran



# Information to support practice clusters and locality planning

**Lyall Cameron**

Primary Care Information Manager  
NHS Ayrshire & Arran

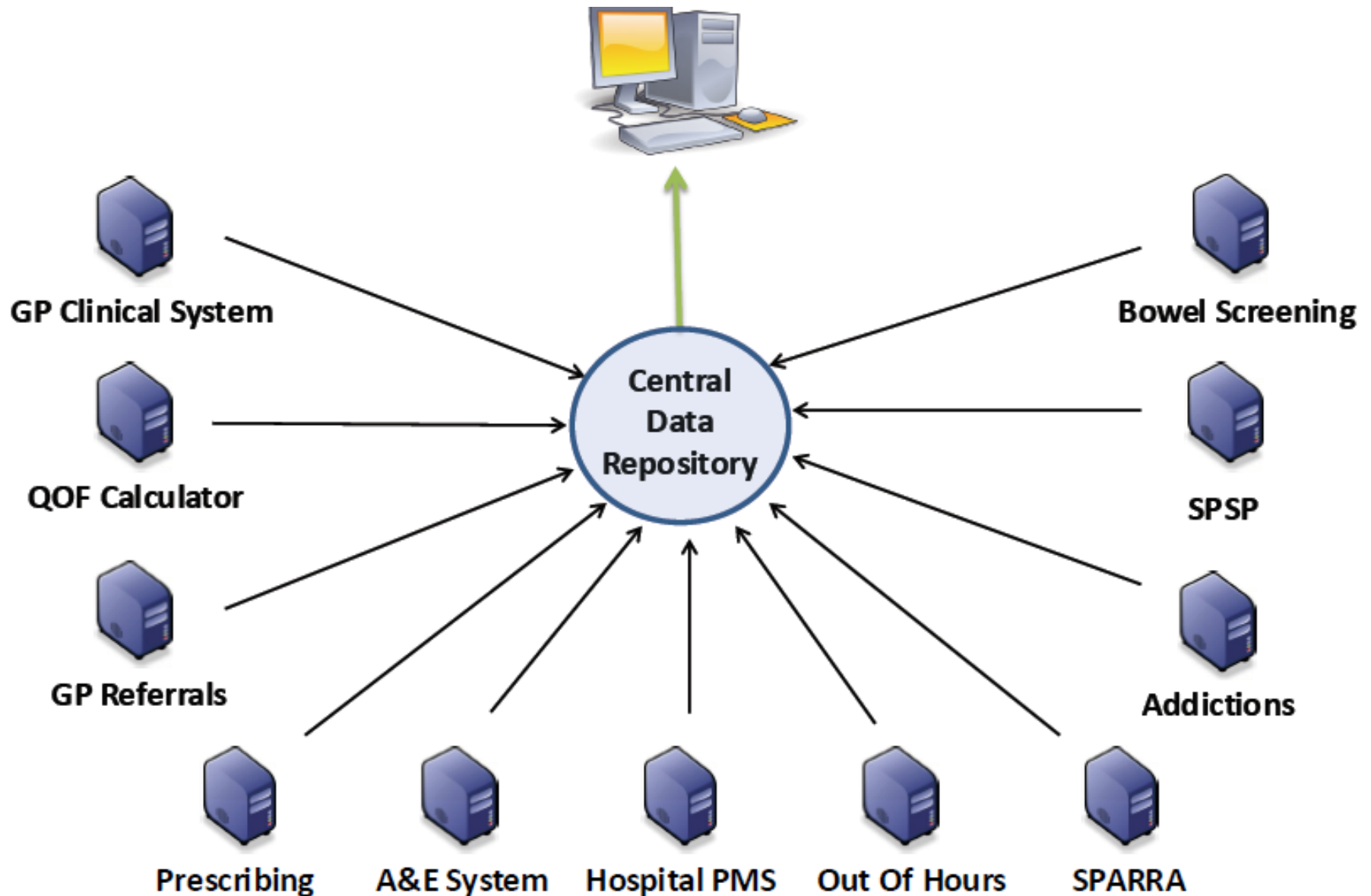


Caring Safe Respectful

# Agenda

- Existing Systems
  - Primary Care Information System
  - Management Reports
  - Locality Planning Tool
- Current & Future Developments
  - Practice Cluster Reporting
  - Complex Patients
  - Enhanced Medication Summary
  - Dashboards
- Q&A

# Primary Care Information System



# Primary Care Information System



Practice - 80

(

Practice)

## Practice Profile

[Demographics](#)

[Deprivation](#)

[Basic Health](#)

[Disease Registers](#)

[Disease Registers \(Age / Gender\)](#)

[Multi-morbidity](#)

## Secondary Care / Out Of Hours

[A&E Attendances](#)

[Emergency Admissions](#)

[Elective Admissions](#)

[Referrals](#)

[Out Of Hours](#)

## GMS Contract

[QOF Achievement](#)

[QOF Exceptions](#)

[QOF Registers](#)

[Continuous Quality Improvement](#)

[Complex Patients](#)

[Polypharmacy](#)

## Enhanced Services

[Activity and Payment](#)

[FLU Vaccine Uptake](#)

## Other Services

[Addictions](#)

[Bowel Screening](#)

# Demographics

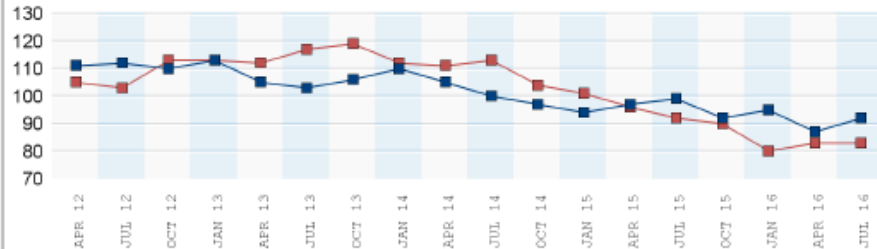
## Trend By Age / Gender

Male

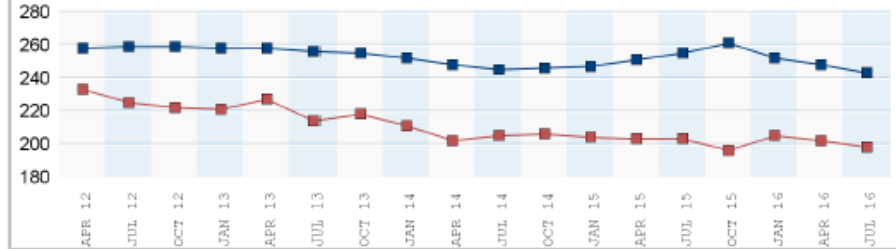
Female

Practice - 80

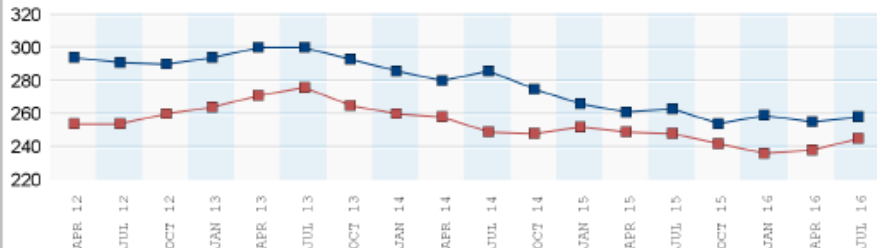
Age Band 0 - 4



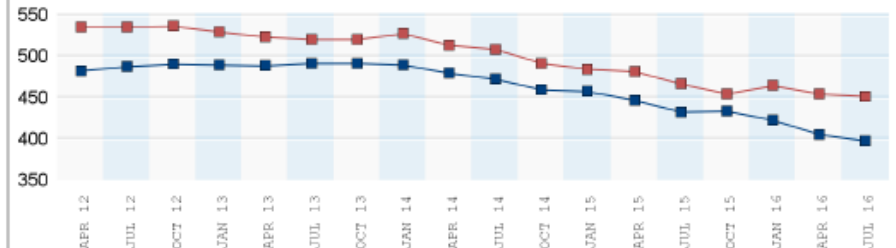
Age Band 5 - 14



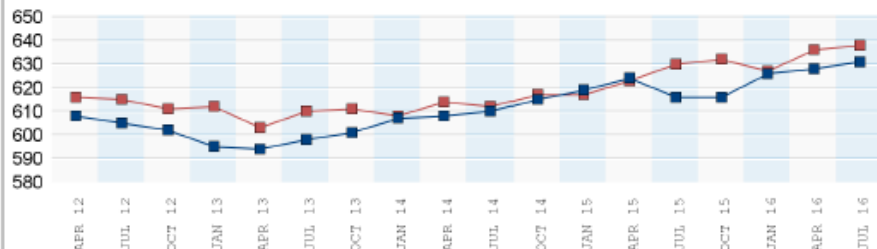
Age Band 15 - 24



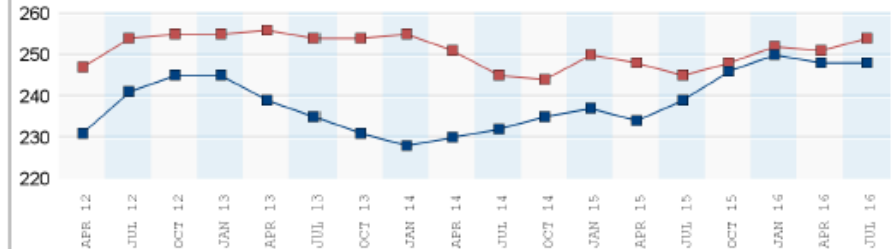
Age Band 25 - 44



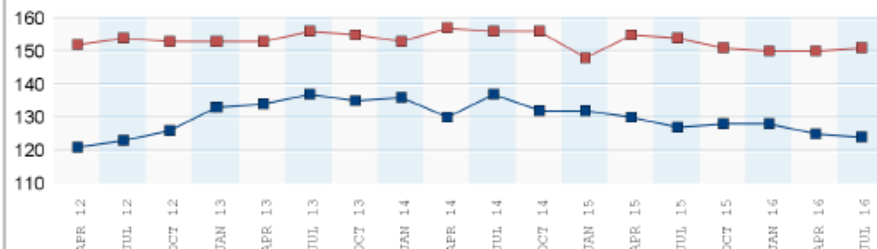
Age Band 45 - 64



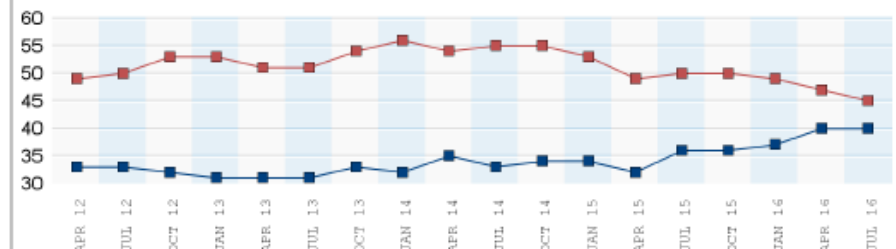
Age Band 65 - 74



Age Band 75 - 84



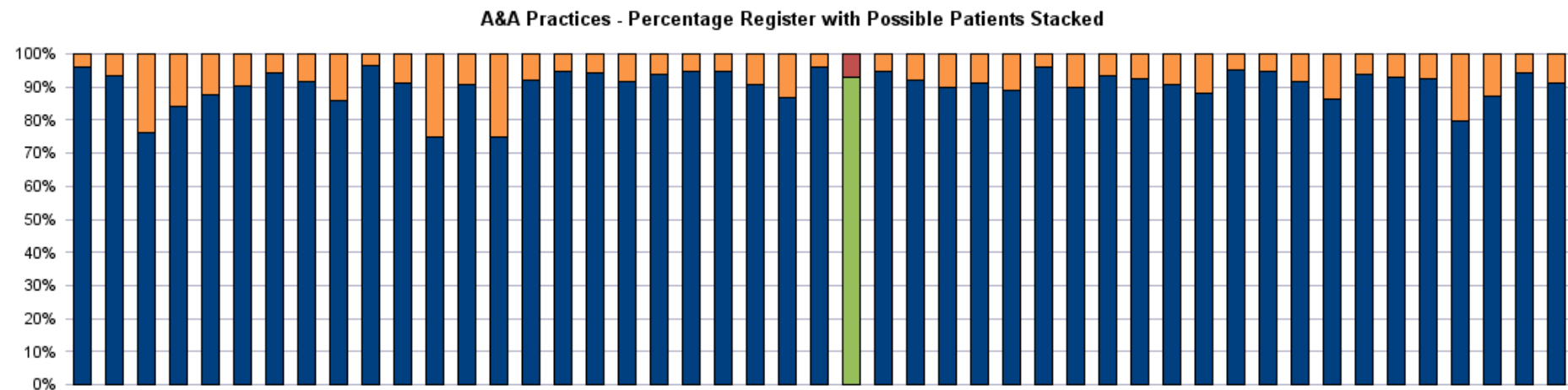
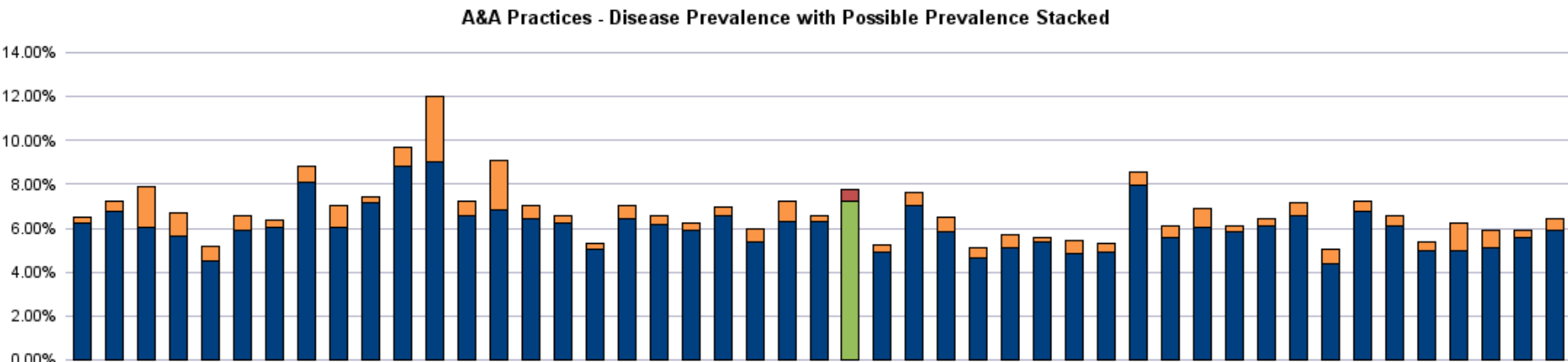
Age Band 85+



The data extracted is pseudo-anonymised (the CHI is encrypted),  
Please run the A&A QOF Disease Register Clinical Audits via EMIS Web to view the reports containing patient data

Disease	Reg Size	Prevalence	Num Not On Reg	Possible Prevalence	% On Reg	AA % On Reg	Ratio
<a href="#">AF</a>	83	2.02%	67	3.66%	55.3%	43.3%	1.28
<a href="#">Asthma</a>	349	8.51%	68	10.17%	83.7%	84.5%	0.99
<a href="#">Cancer</a>	130	3.17%	331	11.24%	28.2%	38.0%	0.74
<a href="#">CHD</a>	247	6.02%	162	9.97%	60.4%	42.6%	1.42
<a href="#">CKD</a>	297	7.24%	28	7.92%	91.4%	83.0%	1.10
<a href="#">COPD</a>	191	4.66%	142	8.12%	57.4%	53.4%	1.07
<a href="#">Dementia</a>	72	1.76%	58	3.17%	55.4%	55.1%	1.01
<a href="#">Depression</a>	327	7.97%	826	28.11%	28.4%	46.6%	0.61
<a href="#">DM</a>	296	7.22%	22	7.75%	93.1%	90.6%	1.03
<a href="#">Epilepsy</a>	48	1.17%	146	4.73%	24.7%	23.3%	1.06
<a href="#">HF</a>	45	1.10%	55	2.44%	45.0%	29.4%	1.53
<a href="#">Hypertension</a>	753	18.36%	57	19.75%	93.0%	81.5%	1.14
<a href="#">LD</a>	36	0.88%	22	1.41%	62.1%	41.2%	1.51
<a href="#">MH</a>	35	0.85%	144	4.36%	19.6%	16.4%	1.19
<a href="#">Obesity</a>	557	13.58%	6	13.73%	98.9%	98.6%	1.00
<a href="#">Osteoporosis</a>	23	0.56%	110	3.24%	17.3%	19.2%	0.90
<a href="#">PC</a>	5	0.12%	0	0.12%	100.0%	96.9%	1.03
<a href="#">PVD</a>	65	1.58%	194	6.31%	25.1%	18.0%	1.40
<a href="#">RA</a>	31	0.76%	181	5.17%	14.6%	26.5%	0.55
<a href="#">STIA</a>	156	3.80%	139	7.19%	52.9%	35.5%	1.49
<a href="#">Thyroid</a>	175	4.27%	2	4.31%	98.9%	94.7%	1.04

These figures are aggregated numbers, based on our EMIS Web extract for A&A Practices with a sharing agreement and consent in place. Our extract is pseudo-anonymised (the CHI is encrypted), if you want a list of possible patients for each register, please run the A&A QOF Disease Register Clinical Audits via the EMIS Web application.



Disease Count	Patients	Practice Rate	AA Rate	Ratio
0	2,414	58.85%	61.96%	0.95
1	834	20.33%	21.08%	0.96
2	420	10.24%	9.16%	1.12
3	223	5.44%	4.41%	1.23
4	116	2.83%	2.08%	1.36
5+	95	2.32%	1.32%	1.75

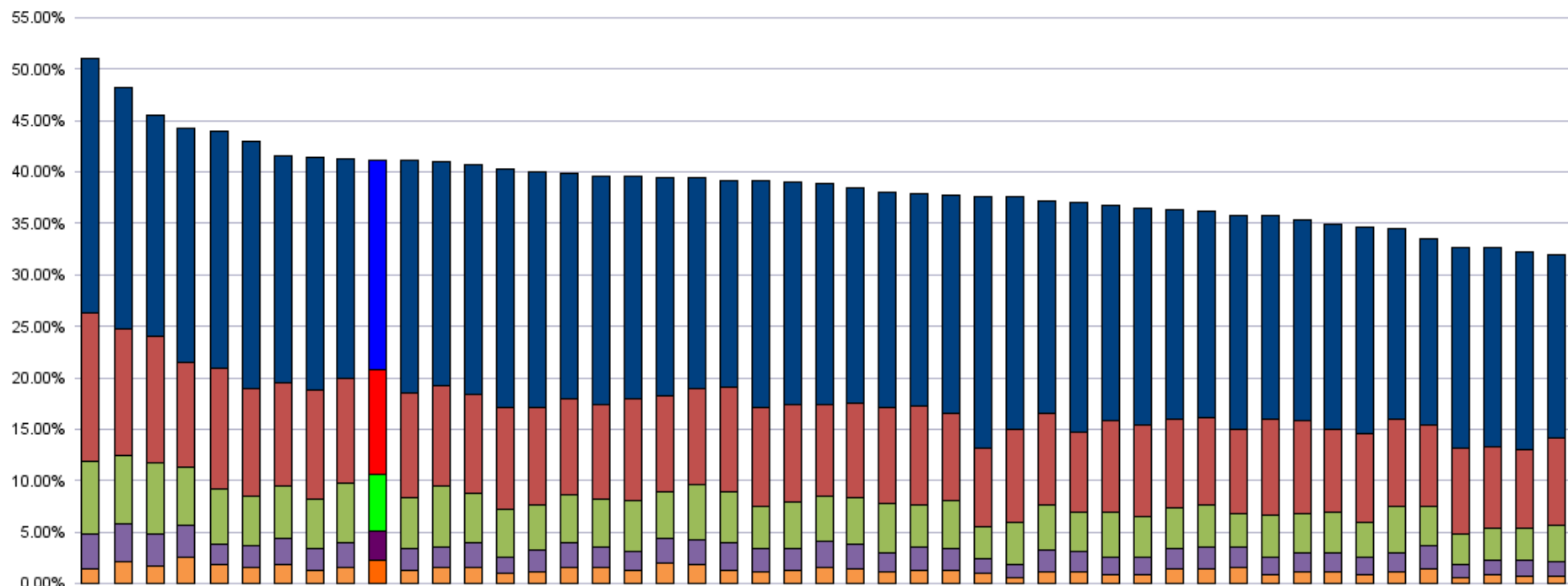
## Percentage of Listsize with Chronic Disease Count

Ref Date - 01/07/2016

Practice - 80



A&amp;A Practices





[Click Here](#) to complete your 'Monthly Declaration Form' when you are satisfied your monthly activity is accurate.

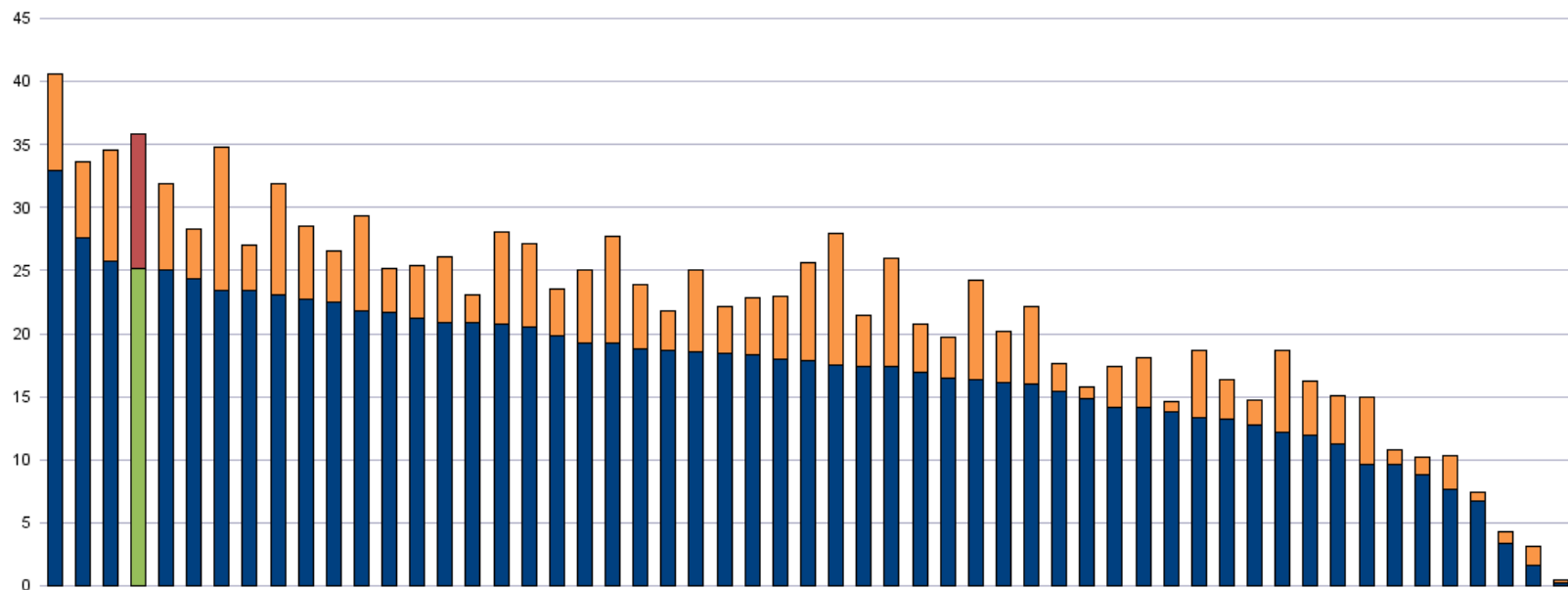
Click below for ES Reports		Apr	May	Jun	Jul	Aug	Total
Estimated Payment		£368	£132	£4,648	£296	£841	£6,285
Anti-Coagulation Level 3	30	29	29	28	29		
	£0	£0	£823	£0	£0		£823.31
Carers	52	52	52	53	53		
	£0	£0	£0	£0	£0		£0.00
Contraceptive Implant - Insertions	2	1	2	0	1		6
	£52	£26	£52	£0	£26		£154.86
Contraceptive Implant - Removals	2	1	3	2	1		9
	£62	£31	£92	£62	£31		£277.11
Diabetes GP Care	253	250	249	249	250		
	£0	£0	£1,537	£0	£0		£1,536.51
Diabetes Insulin Initiation (DSN)	2	0	0	0	0		2
	£100	£0	£0	£0	£0		£100.00
Diabetes Insulin Initiation (Practice)	0	0	0	0	0		0
	£0	£0	£0	£0	£0		£0.00
Disease Modifying Drugs	43	49	47	50	50		
	£0	£0	£1,213	£0	£0		£1,213.07
Helicobacter Pylori	3	1	4	3	1		12
	£75	£25	£100	£75	£25		£300.00
Hepatitis B Completed	0	0	0	0	0		0
	£0	£0	£0	£0	£0		£0.00
Hepatitis B Exceptions	0	0	0	0	0		0
	£0	£0	£0	£0	£0		£0.00
IUCD Fitting	1	0	1	2	0		4
	£80	£0	£80	£160	£0		£319.68
IUCD Register	143	142	141	145	144		
	£0	£0	£752	£0	£0		£751.53
Learning Disability	34	36	36	36	36		
	£0	£0	£0	£0	£759		£759.14
Ring Pessary	0	1	0	0	0		1
	£0	£50	£0	£0	£0		£50.00

Some specialties have been grouped, use the left-hand column to drill down to individual specialties. The right-hand column contains hyperlinks to more detailed reports.

SpecialtyGroupL1	Referrals	Rate / 1000	AA Rate / 1000	Ratio	% Urgent	AA % Urgent	Urgency Ratio	Comparison Reports
Addictions	14	3.42	3.46	0.99	7.14%	14.21%	0.50	<a href="#">Addictions</a>
Anaesthetics	5	1.22	1.86	0.66	0.00%	5.32%	0.00	<a href="#">Anaesthetics</a>
Audiology	33	8.05	6.54	1.23	0.00%	1.23%	0.00	<a href="#">Audiology</a>
Cancer Suspected	153	37.34	18.68	2.00	100.00%	100.00%	1.00	<a href="#">Cancer Suspected</a>
Cardiology	107	26.12	15.60	1.67	23.36%	22.80%	1.02	<a href="#">Cardiology</a>
Colorectal	25	6.10	5.01	1.22	20.00%	33.11%	0.60	<a href="#">Colorectal</a>
Dermatology	147	35.88	21.75	1.65	29.93%	21.71%	1.38	<a href="#">Dermatology</a>
Diagnostics	59	14.40	7.69	1.87	30.51%	34.43%	0.89	<a href="#">Diagnostics</a>
Dietetics	72	17.57	9.46	1.86	4.17%	5.80%	0.72	<a href="#">Dietetics</a>
Endocrinology and Diabetes	33	8.05	4.05	1.99	30.30%	17.23%	1.76	<a href="#">Endocrinology and Diabetes</a>
ENT	115	28.07	18.46	1.52	23.48%	16.16%	1.45	<a href="#">ENT</a>
Gastroenterology	42	10.25	6.58	1.56	21.43%	26.45%	0.81	<a href="#">Gastroenterology</a>
General Medicine	3	0.73	0.71	1.03	0.00%	17.52%	0.00	<a href="#">General Medicine</a>
General Surgery	115	28.07	21.81	1.29	13.91%	20.79%	0.67	<a href="#">General Surgery</a>
Geriatric Medicine	39	9.52	2.49	3.83	17.95%	14.02%	1.28	<a href="#">Geriatric Medicine</a>
Gynaecology	81	19.77	13.61	1.45	24.69%	18.33%	1.35	<a href="#">Gynaecology</a>
Haematology	5	1.22	2.02	0.60	40.00%	24.42%	1.64	<a href="#">Haematology</a>
MH	155	37.83	34.55	1.10	20.65%	14.26%	1.45	<a href="#">MH</a>
MSK_Physio	335	81.77	49.94	1.64	15.22%	13.64%	1.12	<a href="#">MSK_Physio</a>
Neurology	34	8.30	6.92	1.20	26.47%	18.98%	1.39	<a href="#">Neurology</a>
Obstetrics	1	0.24	0.69	0.36	0.00%	18.56%	0.00	<a href="#">Obstetrics</a>
Ophthalmology	27	6.59	4.79	1.38	22.22%	10.16%	2.19	<a href="#">Ophthalmology</a>
Oral and Maxillofacial Surgery	14	3.42	2.37	1.44	28.57%	20.50%	1.39	<a href="#">Oral and Maxillofacial Surgery</a>
Other Specialty	44	10.74	7.12	1.51	18.18%	13.49%	1.35	<a href="#">Other Specialty</a>
Paediatrics	82	20.01	9.34	2.14	9.76%	11.70%	0.83	<a href="#">Paediatrics</a>
Plastic Surgery	5	1.22	1.38	0.89	0.00%	12.67%	0.00	<a href="#">Plastic Surgery</a>
Podiatry	83	20.26	6.57	3.08	3.61%	7.72%	0.47	<a href="#">Podiatry</a>
Renal Medicine	3	0.73	0.99	0.74	0.00%	13.98%	0.00	<a href="#">Renal Medicine</a>

Dermatology Referral Rate / 1000 Patients (01/09/2015 - 31/08/2016)

Practice - 80



# Management Reports

- Suite of reports used by primary care management team
- Data visible for all practices
- Standard Deviation to identify specific data for attention

# Disease Register Trends By Practice

## Diabetes

	01/04/2012			01/04/2013			01/04/2014			01/04/2015			01/04/2016		
A&A	5.17%			5.41%			5.59%			5.70%			5.87%		
	Reg	Prev	Diff	Reg	Prev	Diff	Reg	Prev	Diff	Reg	Prev	Diff	Reg	Prev	Diff
80	448	5.23%		455	5.31%	7	478	5.58%	23	511	5.96%	33	535	6.24%	24
80	256	6.28%		265	6.50%	9	263	6.45%	-2	261	6.40%	-2	274	6.72%	13
80	491	5.75%		502	5.87%	11	496	5.80%	-6	499	5.84%	3	504	5.90%	5
80	251	4.72%		262	4.93%	11	278	5.23%	16	283	5.33%	5	299	5.63%	16
80	87	3.89%		97	4.34%	10	96	4.29%	-1	96	4.29%	0	103	4.60%	7
80	463	5.21%		480	5.40%	17	490	5.51%	10	488	5.49%	-2	506	5.69%	18
80	477	5.44%		492	5.61%	15	504	5.74%	12	508	5.79%	4	493	5.62%	-15
80	447	5.57%		462	5.76%	15	471	5.87%	9	464	5.78%	-7	473	5.89%	9
80	438	5.50%		466	5.85%	28	464	5.82%	-2	469	5.89%	5	482	6.05%	13
80	109	7.30%		115	7.70%	6	118	7.90%	3	118	7.90%	0	121	8.10%	3
80	317	5.15%		342	5.56%	25	363	5.90%	21	371	6.03%	8	375	6.09%	4
80	406	5.20%		416	5.33%	10	449	5.75%	33	461	5.91%	12	469	6.01%	8
80	767	6.28%		830	6.79%	63	856	7.00%	26	844	6.91%	-12	873	7.14%	29
80	111	8.26%		118	8.78%	7	115	8.56%	-3	119	8.85%	4	121	9.00%	2
80	293	8.29%		300	8.49%	7	305	8.63%	5	315	8.91%	10	315	8.91%	0
80	337	5.49%		353	5.75%	16	370	6.03%	17	383	6.24%	13	399	6.50%	16
80	296	5.85%		324	6.40%	28	329	6.50%	5	338	6.68%	9	346	6.84%	8
80	331	5.44%		338	5.55%	7	343	5.63%	5	343	5.63%	0	342	5.62%	-1
80	251	5.98%		260	6.19%	9	263	6.27%	3	271	6.46%	8	268	6.39%	-3
80	212	5.47%		219	5.65%	7	229	5.91%	10	233	6.01%	4	243	6.27%	10
80	356	4.09%		369	4.24%	13	385	4.43%	16	414	4.76%	29	440	5.06%	26
80	212	4.95%		221	5.16%	9	245	5.72%	24	262	6.12%	17	276	6.44%	14
80	787	5.65%		789	5.66%	2	807	5.79%	18	818	5.87%	11	848	6.08%	30
80	406	5.25%		431	5.58%	25	434	5.62%	3	439	5.68%	5	449	5.81%	10
80	688	5.48%		743	5.92%	55	784	6.24%	41	797	6.35%	13	822	6.54%	25
80	535	4.81%		554	4.98%	19	564	5.07%	10	587	5.27%	23	613	5.51%	26
80	599	4.84%		656	5.30%	57	672	5.43%	16	670	5.41%	-2	680	5.49%	10
80	398	4.93%		408	5.06%	10	425	5.27%	17	413	5.12%	-12	423	5.24%	10
80	212	5.79%		218	5.95%	6	215	5.87%	-3	226	6.17%	11	225	6.14%	-1
80	228	5.56%		236	5.75%	8	238	5.80%	2	247	6.02%	9	256	6.24%	9
80	251	6.44%		264	6.78%	13	310	7.96%	46	297	7.63%	-13	320	8.22%	23
80	272	6.64%		263	6.42%	-9	273	6.66%	10	281	6.86%	8	294	7.18%	13
80	391	3.77%		419	4.04%	28	446	4.31%	27	488	4.71%	42	511	4.93%	23
80	323	4.83%		333	4.98%	10	329	4.92%	-4	339	5.07%	10	341	5.10%	2

# H&SCP Information System

- System developed to support planning within South Ayrshire H&SCP
- Included many of PCIS data sources
- New extract required from all GP practices (patient's CHI number, postcode and anonymous ID)
- Linked to SIMD data to group patients by SIMD datazone

# H&SCP Information System

- System contains 5 geographical levels of reporting
  - All Patients (data from all consenting practices)
    - HSCP (e.g South Ayrshire H&SCP)
      - Locality (e.g Ayr South & Coylton)
        - Neighbourhood (e.g Alloway & Doonfoot)
          - Datazone (e.g S01005550)
- Currently no practice/patient level data available

# South Ayrshire H&SCP Information System

Demographics	Basic Health	Chronic Disease	Planned Care	Unscheduled Care	Other Services	Social Services	Summary by Area
<a href="#">Populations by Area</a>	<a href="#">Smoking Status</a>	<a href="#">Multi-Morbidity</a>	<a href="#">Referrals By Area</a>	<a href="#">Out Of Hours</a>	<a href="#">Addictions</a>	Home Care	South Ayrshire Practices
<a href="#">Populations by Age/Gender</a>	<a href="#">Alcohol Consumption</a>	<a href="#">Disease Registers</a>	<a href="#">Referrals by Specialty (All)</a>	<a href="#">A&amp;E Attendances</a>	Community Nursing	OT	<a href="#">HSCP Summary</a>
<a href="#">Deprivation</a>	<a href="#">BMI</a>		<a href="#">Referrals by Specialty (HSCP)</a>	<a href="#">Emergency Admissions</a>	AHPs	Social Work	Locality
Birth Rates	<a href="#">Blood Pressure</a>		<a href="#">Referrals by Specialty (Locality)</a>		ICES	Education	
Death Rates			<a href="#">Elective Admissions</a>		Telecare		
			Out-Patient Attendances		Emergency Services		



## Multi-Morbidity

	0	1	2	3	4	5	6	7	8	9	10+
<u>South Ayrshire Practices</u>	39,473	13,257	5,875	2,817	1,277	513	186	53	14	3	2
	62.19%	20.89%	9.26%	4.44%	2.01%	0.81%	0.29%	0.08%	0.02%	0.00%	0.00%



	0	1	2	3	4	5	6	7	8	9	10+
<u>South Ayrshire HSCP</u>	37,175	12,516	5,552	2,666	1,213	476	174	44	11	2	2
	62.13%	20.92%	9.28%	4.46%	2.03%	0.80%	0.29%	0.07%	0.02%	0.00%	0.00%
<u>Other HSCP</u>	2,008	659	295	142	61	35	11	9	3	1	
	62.28%	20.44%	9.15%	4.40%	1.89%	1.09%	0.34%	0.28%	0.09%	0.03%	
<u>Unknown</u>	290	82	28	9	3	2	1				
	69.88%	19.76%	6.75%	2.17%	0.72%	0.48%	0.24%				



	0	1	2	3	4	5	6	7	8	9	10+
<u>Tron</u>	11,804	3,907	1,693	745	311	140	47	12	1		1
	63.25%	20.94%	9.07%	3.99%	1.67%	0.75%	0.25%	0.06%	0.01%		0.01%
<u>Prestwick</u>	3,326	1,046	471	223	97	42	12	3	2		
	63.69%	20.03%	9.02%	4.27%	1.86%	0.80%	0.23%	0.06%	0.04%		
<u>Ayr North and Former Coalfield Communities</u>	3,573	1,241	514	289	130	58	13	2	1	1	
	61.37%	21.32%	8.83%	4.96%	2.23%	1.00%	0.22%	0.03%	0.02%	0.02%	
<u>Ayr South and Coynton</u>	8,829	2,894	1,338	678	334	115	47	13	3	1	
	61.95%	20.31%	9.39%	4.76%	2.34%	0.81%	0.33%	0.09%	0.02%	0.01%	
<u>Maybole and North Carrick Villages</u>	5,207	1,805	757	367	160	57	24	7			
	62.11%	21.53%	9.03%	4.38%	1.91%	0.68%	0.29%	0.08%			
<u>Girvan and South Carrick Villages</u>	4,436	1,623	779	364	181	64	31	7	4		1
	59.23%	21.67%	10.40%	4.86%	2.42%	0.85%	0.41%	0.09%	0.05%		0.01%



	0	1	2	3	4	5	6	7	8	10+
<u>Girvan</u>	2,213	825	358	175	81	27	15	2	1	
	59.86%	22.32%	9.68%	4.73%	2.19%	0.73%	0.41%	0.05%	0.03%	
<u>South Carrick Villages</u>	2,223	798	421	189	100	37	16	5	3	1
	58.61%	21.04%	11.10%	4.98%	2.64%	0.98%	0.42%	0.13%	0.08%	0.03%



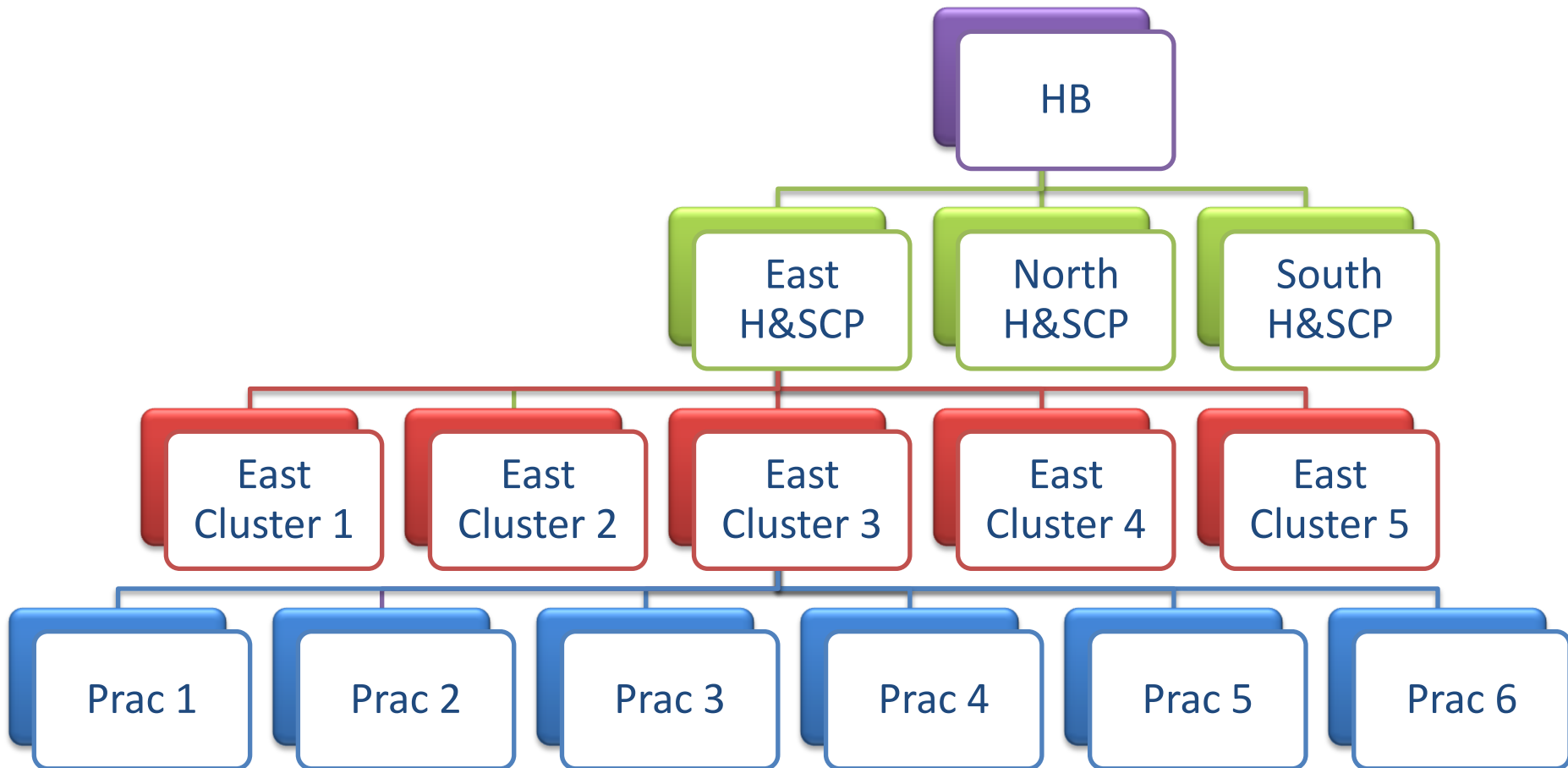
	0	1	2	3	4	5	6	7	8	10+
<u>S01005522</u>	336	141	76	33	17	11	3	3		
	54.19%	22.74%	12.26%	5.32%	2.74%	1.77%	0.48%	0.48%		
<u>S01005523</u>	427	133	69	34	17	4			2	
	62.24%	19.39%	10.06%	4.96%	2.48%	0.58%			0.20%	

# Current & Future Developments

- Recent upgrade to new BO version
- Merge practice and locality systems
- Update universe and reports to support clusters
- Complex Patients
- Enhanced Medication Summary
- Dashboards
- New modules

# Current Developments

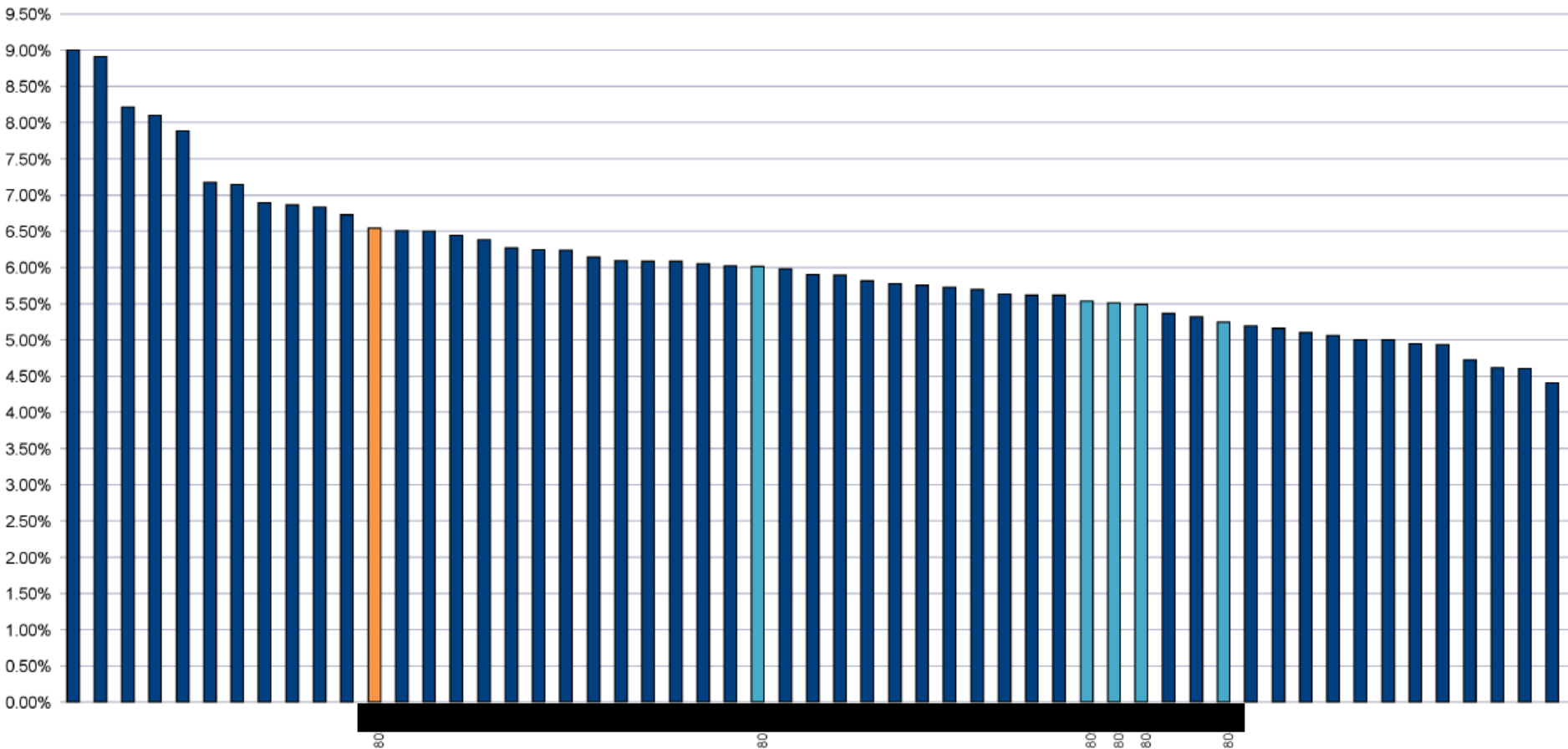
## Supporting Clusters



# Current Developments

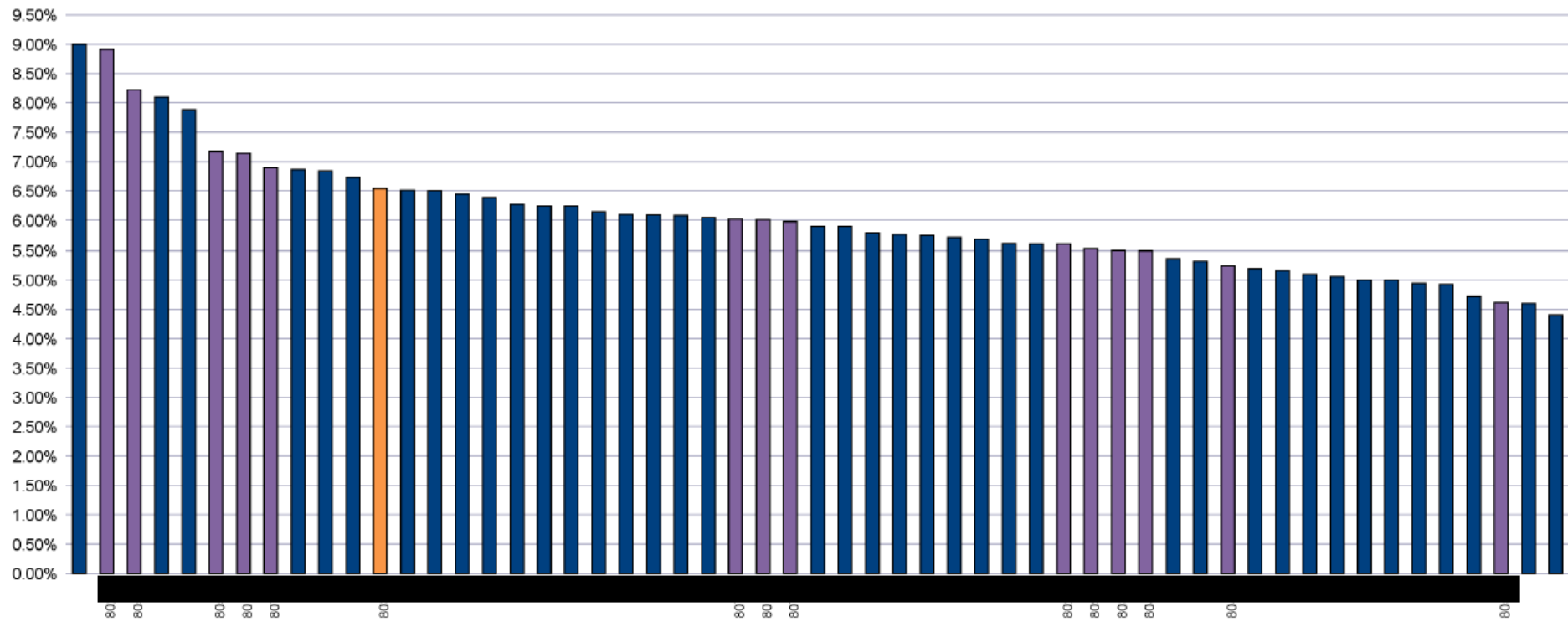
## Supporting Clusters

### Diabetes Prevalence



# Current Developments Supporting Clusters

## Diabetes Prevalence

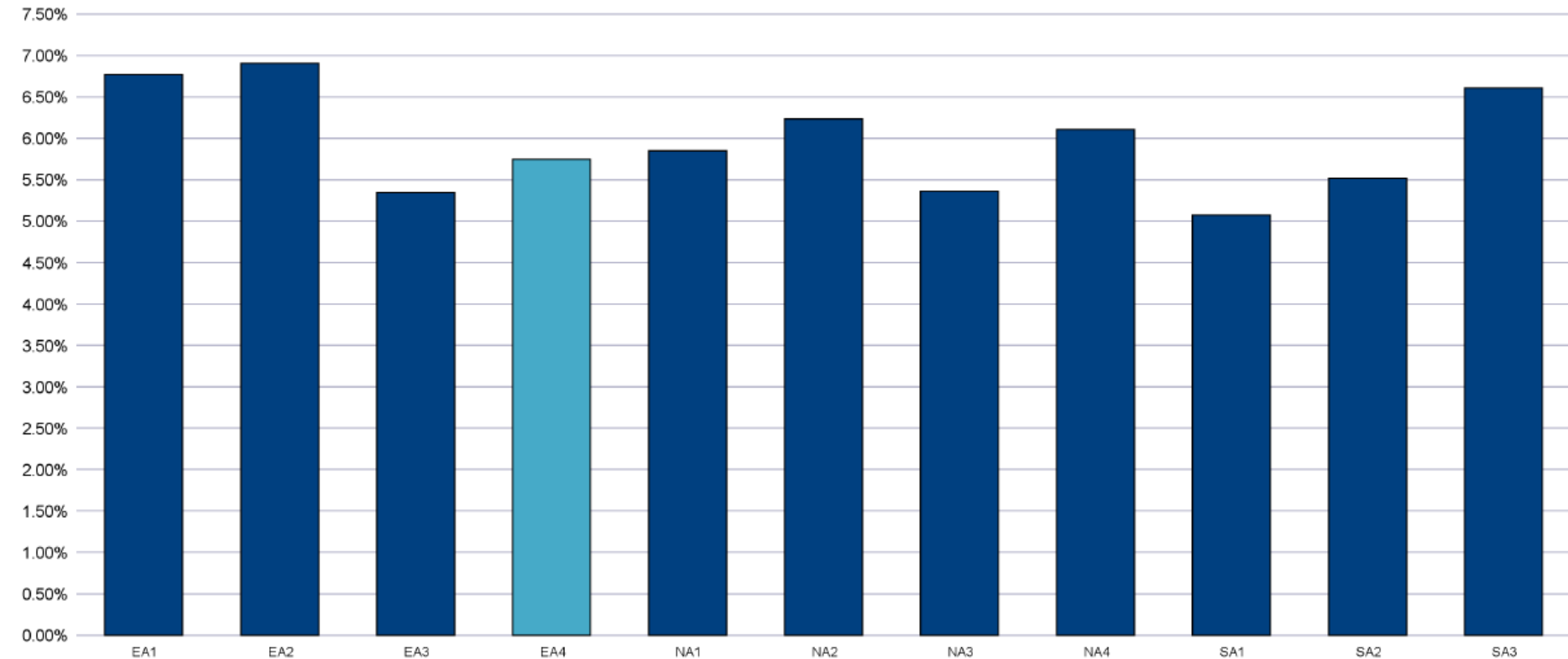


# Current Developments

## Supporting Clusters

### Diabetes Prevalence

	Practices	5.75%
A&A		5.87%

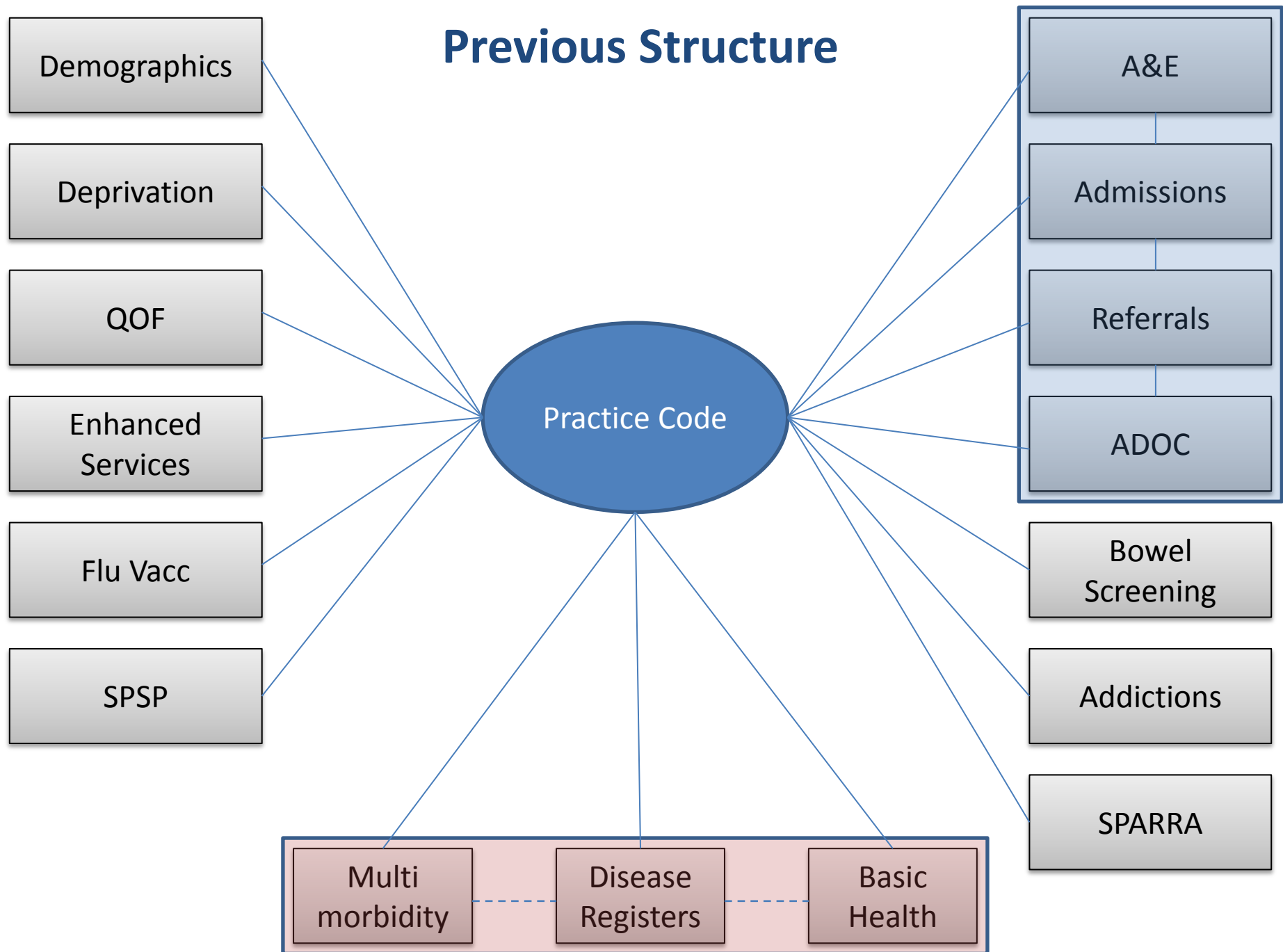


# Current Developments

## Universe Design

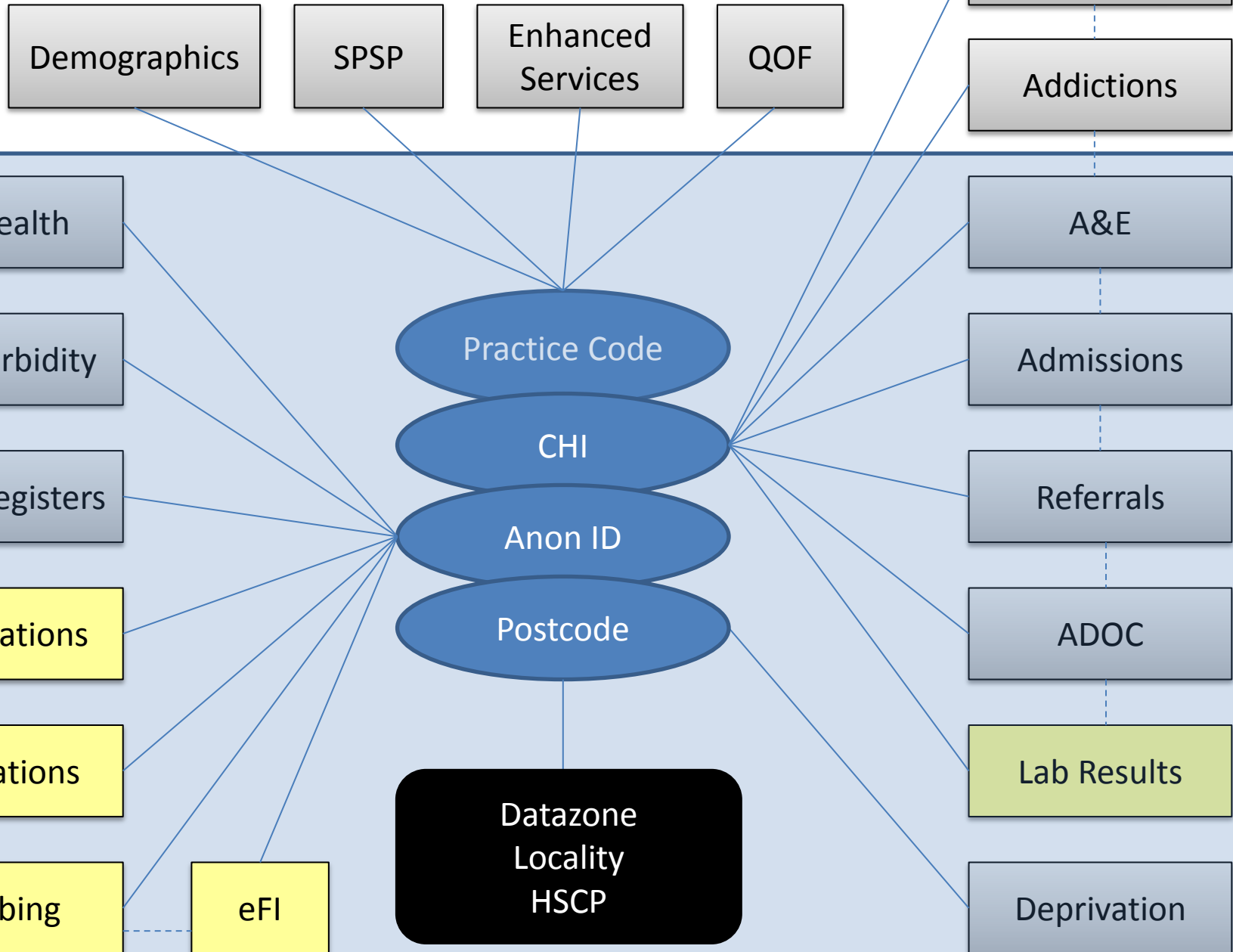
- Previously all data was linked using practice code
- Only secondary care data contained CHI
- Moving towards all data linked by CHI number
- Require postcode for locality planning

# Previous Structure





# Proposed New Structure



# Current Developments

## Complex Patients

- New module developed to identify most 'complex' patients within each practice
- Include data from multiple sources
  - GP System (eFI, multi-morbidity, prescribing)
  - Secondary Care (A&E, Emergency Admissions)
  - OOH Contacts
- Data will be linked using CHI number

# Complex Patients - Dataset

- Age EMIS Web
- Care Home EMIS Web
- Active Repeat Medication EMIS Web
- Frailty score EMIS Web
- A&E Attendances (12m) Symphony
- Emergency Admissions (12m) PMS
- Bed Days (12m) PMS
- OOH Contacts (12m) Adastra

# Electronic Frailty Index

- The electronic frailty index (eFI) helps identify and predict adverse outcomes for older patients in primary care
- Information for the eFI is collected using existing electronic health record information
- The score is strongly predictive of adverse outcomes and has been validated in large international studies
- The eFI is presented as a score  
(e.g. if 9 deficits are present out of a possible total of 36 the FI score = 0.25)

# Electronic Frailty Index

The eFI can be used to score to define frailty categories:

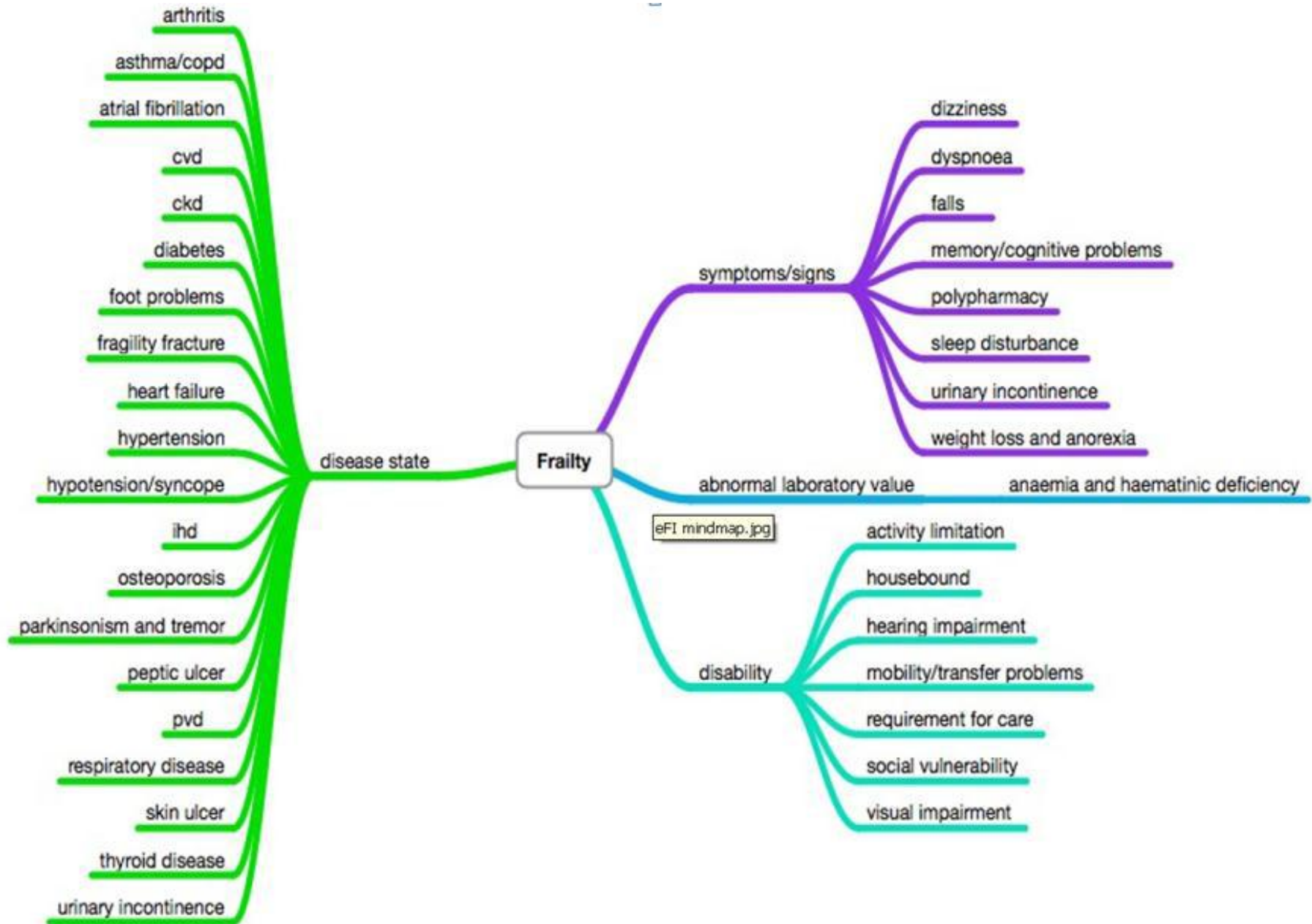
**Fit (eFI score 0 - 0.12)** — People who have no or few long-term conditions that are usually well controlled. This group would mainly be independent in day to day living activities.

**Mild Frailty (eFI score 0.13 – 0.24)** — People who are slowing up in older age and may need help with personal activities of daily living such as finances, shopping, transportation.

**Moderate Frailty (eFI score 0.25 – 0.36)** — People who have difficulties with outdoor activities and may have mobility problems or require help with activities such as washing and dressing.

**Severe Frailty (eFI score > 0.36)** — People who are often dependent for personal cares and have a range of long-term conditions and multi-morbidity. Some of this group may be medically stable but others can be unstable and at risk of dying within 6 - 12 months.

# Electronic Frailty Index



# Current Developments

## Complex Patients Report

CHI	Age	Gender	Repeat Meds	Multi-morbidity	Frailty Score	Care Home	Polypharmacy Review	ACP	A&E Attend	Emergency Admissions	Bed Days	OOH Home Visits	OOH PCTC	OOH Advice
<a href="#">1</a>	91	Female	18	5	41.7%			29/07/2016	3	5	61	4		5
<a href="#">2</a>	89	Female	16	7	50.0%	Yes			3	3	13	3		1
<a href="#">2</a>	61	Male	8	2	36.1%				20	12	95	4		10
<a href="#">2</a>	81	Male	22	8	38.9%			10/03/2014	5	5	44	1		
<a href="#">0</a>	74	Male	26	9	41.7%				3	3	41	5		2
<a href="#">1</a>	87	Male	14	4	38.9%				7	5	39	1		
<a href="#">0</a>	60	Female	25	4	41.7%				3	3	32	3		3
<a href="#">2</a>	93	Male	15	6	33.3%			16/12/2013	6	5	45	2		5
<a href="#">2</a>	79	Female	15	3	33.3%				9	7	28	4		3
<a href="#">2</a>	66	Male	13	3	25.0%				12	6	17	6		
<a href="#">2</a>	68	Male	28	5	36.1%				4	4	34			1
<a href="#">2</a>	83	Female	14	4	36.1%				3	3	30	2		
<a href="#">2</a>	81	Female	10	5	38.9%				1	1	77	3		1
<a href="#">1</a>	91	Female	6	4	47.2%				3	2	32	3		3
<a href="#">2</a>	85	Female	14	5	44.4%	Yes		03/02/2014	1			1		5
<a href="#">1</a>	94	Female	8	3	38.9%	Yes	18/08/2015		1	1	9			1
<a href="#">1</a>	88	Female	14	3	30.6%				4	3	49	1		1
<a href="#">1</a>	76	Female	11	2	25.0%				6	5	18			3
<a href="#">1</a>	76	Female	14	5	44.4%		07/03/2016		2	2	90	1		
<a href="#">2</a>	69	Female	23	6	41.7%				1	1	7	1		
<a href="#">2</a>	58	Female	13	2	36.1%				2	4	12	3		

# Current Developments

## Enhanced Medication Summary

- New tool developed in collaboration with Prof Bruce Guthrie (Dundee University)
- Identifies patients with high-risk prescribing
- Detailed report available to clinicians containing information on prescribing risks, compliance etc



# Future Developments

- Consultations Data
- Lab Results
- Immunisations
- CHI Linkage
- New GMS Contract Changes

# Dashboards

- Currently 'Home' Page only contains hyperlinks to each module
- Plan to develop multiple dashboards
- The dashboard, reports available and level of access will be determined by the role and the organisation of the user
- For example a new dashboard will be developed for Practice Manager role, which will display relevant information on the practice data, highlight areas, and allow users to drill in to detailed reports
- Users will be consulted to confirm requirements

**Questions?**