

***Beyond DocMan  
Transfer –  
what next for GP  
electronic records  
transfer in  
Scotland?***

# ***Agenda***

- ✓ ***Electronic GP record transfer in Scotland***
  - ✓ DocMan Transfer project achievements
- ✓ ***Electronic GP record transfer in England***
  - ✓ GP2GP programme approach and experience
- ✓ ***So what's next?***
  - ✓ Options for the next stage in Scotland
- ✓ ***Interactive session***

# ***DocMan Transfer Project in Scotland***

# ***Practitioner Services***

## ✓ ***180 staff in PSD Medical***

- ✓ Approx 50WTE records management
- ✓ Approx 60 WTE in registration (inc DQ)

## ✓ ***Metrics (p/a)***

- ✓ £686m paid to GP practices
- ✓ 198k new patient registrations
- ✓ 1.38m transfers/updates to registrations
- ✓ 7k assignments/removals
- ✓ 65k medical exemption/maternity certificates
- ✓ 455k records transferred (paper and/or electronic)

# ***LDP targets (to 2010/11)***

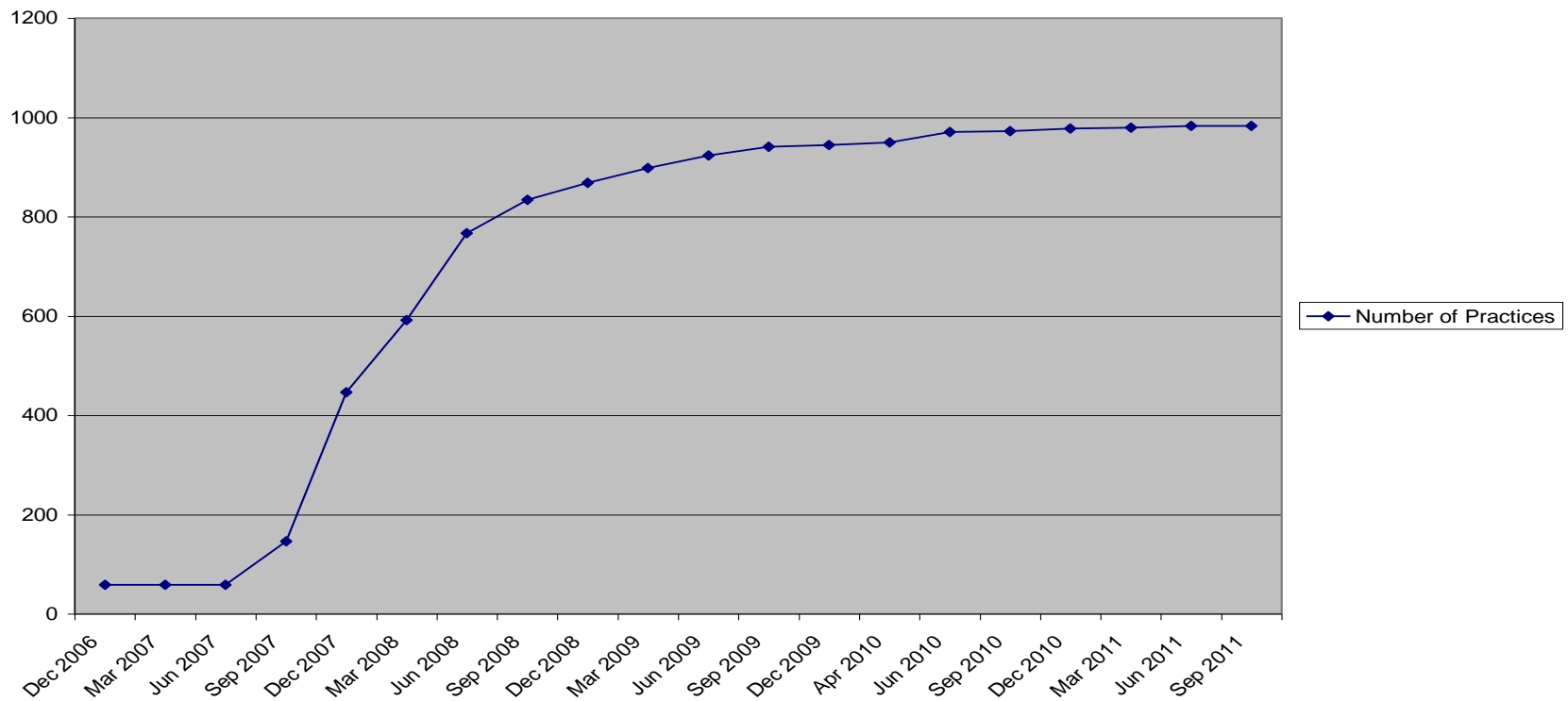
- ✓ ***99% of registration updates within 7 days***
- ✓ ***90% of paper records transferred within 6 weeks***
- ✓ ***Both “end to end”***
  - ✓ Needs new and old practices to do their bit in good time

# ***DocMan Transfer***

- ✓ ***DocMan deployed in many GP practices 2005 onwards***
- ✓ ***DocMan Transfer service piloted in NHS A&A December 2006***
- ✓ ***Roll out programme approved with Practitioner Services leading implementation***
- ✓ ***As at September 2011, 983/1008 (=98%) of Scottish GP practices live***

# Implementation practices

Docman Transfer Enabled Practices



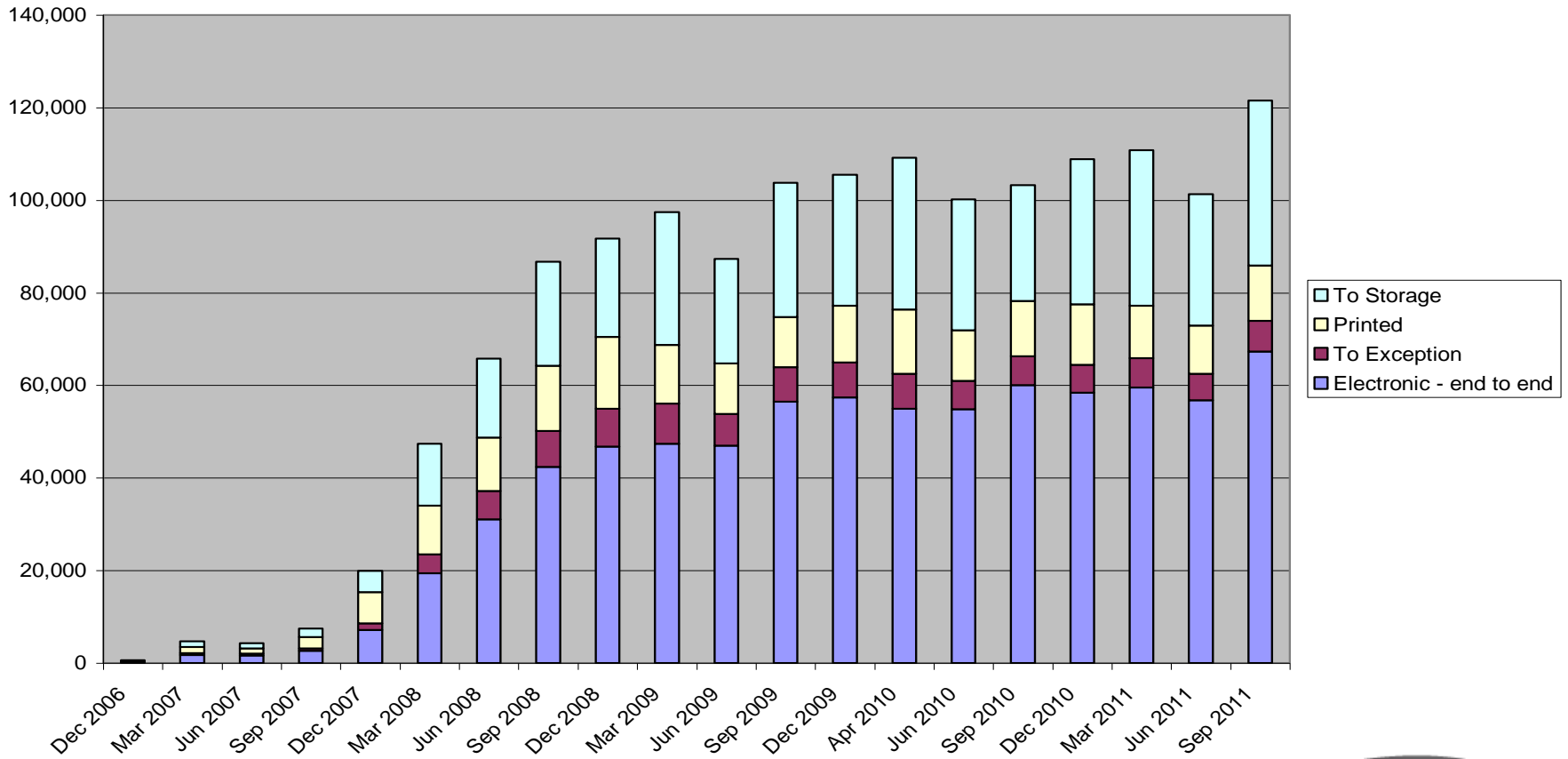
# Implemented at Sep 2011

Health Board	DocMan			New Practices Live This Month	DocMan Transfer	
	Total No of Practices	No. DocMan Installs	% DocMan Installs		No. Practices Docman Transfer Enabled	% DocMan Transfer Enabled
Argyll and Bute	34	31	91%		29	85%
Ayrshire and Arran	57	57	100%		57	100%
Borders	23	23	100%		23	100%
Dumfries and Galloway	34	34	100%		34	100%
Fife	57	57	100%		57	100%
Forth Valley	57	57	100%		56	98%
Grampian	81	81	100%		77	95%
Greater Glasgow and Clyde	266	261	98%		260	98%
Highland	68	67	99%		67	99%
Lanarkshire	98	98	100%		97	99%
Lothian	126	123	98%		123	98%
Orkney	14	14	100%		14	100%
Shetland	10	10	100%		10	100%
Tayside	69	69	100%		69	100%
WI	10	10	100%		10	100%
<b>TOTAL</b>	<b>1004</b>	<b>992</b>	<b>99%</b>	<b>0</b>	<b>983</b>	<b>98%</b>



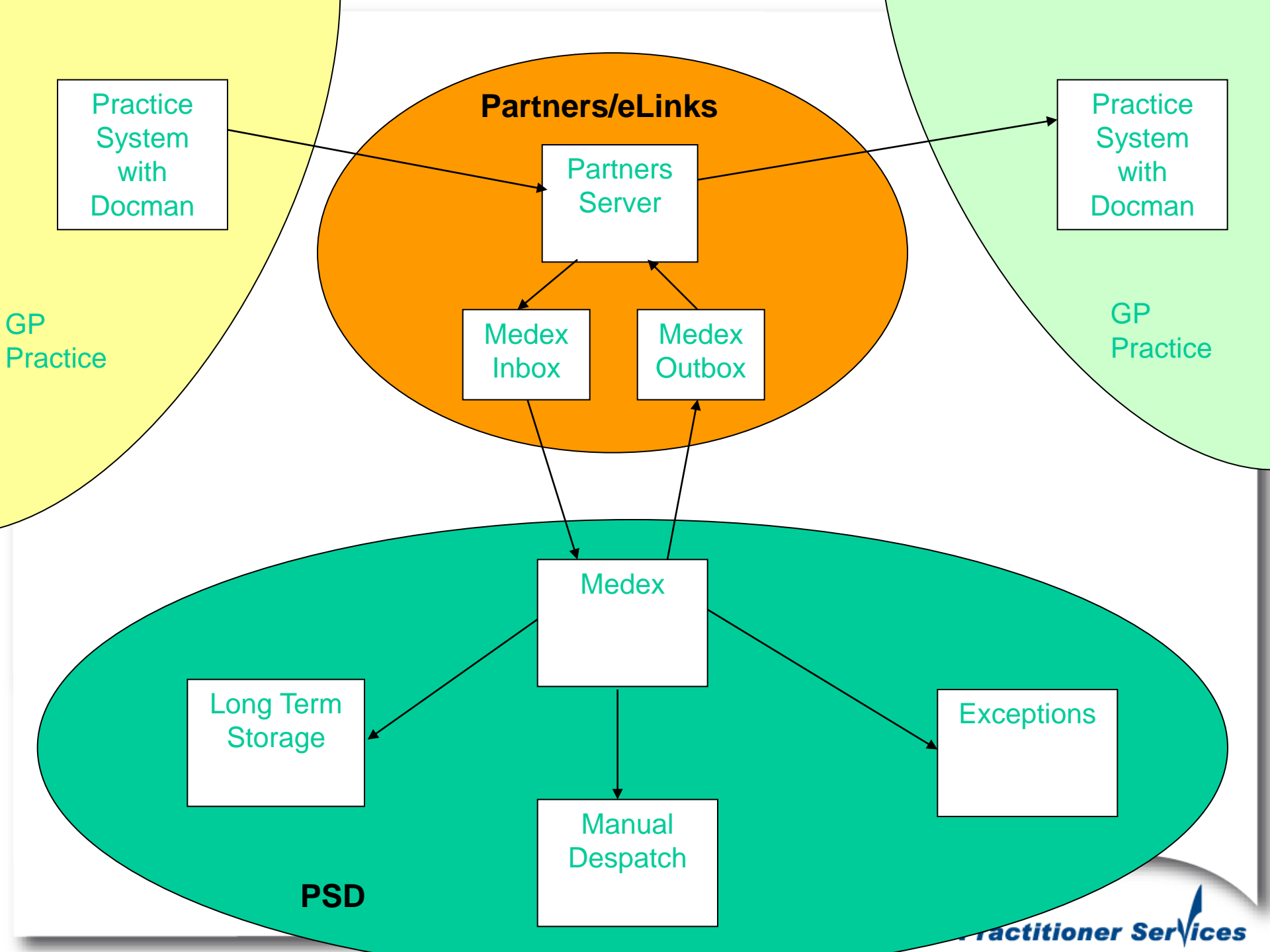
# Implementation volumes

Docman Transfer Volumes



# ***Key components***

- ✓ ***Local DocMan repository***
- ✓ ***Standard folder structure***
- ✓ ***Clinical system summary report***
- ✓ ***Export process***
- ✓ ***Security and encryption***
- ✓ ***Manifest***
- ✓ ***eLinks***
- ✓ ***MedEx***
- ✓ ***Import process***
- ✓ ***Record retention***
- ✓ ***Cross-border handled manually/paper***



# ***Recent improvements***

## ***✓ Un-archive support***

- ✓ From DocMan 7:1239 onwards

- ✓ Deceased patients, Audit, Complaints

- ✓ Audit trail kept

## ***✓ Increased run-times***

- ✓ MedEx was every 3 hours now runs hourly between 7am – 9pm, Mon – Fri

- ✓ Same day transfer of records

# ***Current challenges (1)***

- ✓ ***Registration process***

- ✓ Overnight batch process on mainframe

- ✓ ***Large requirement to print***

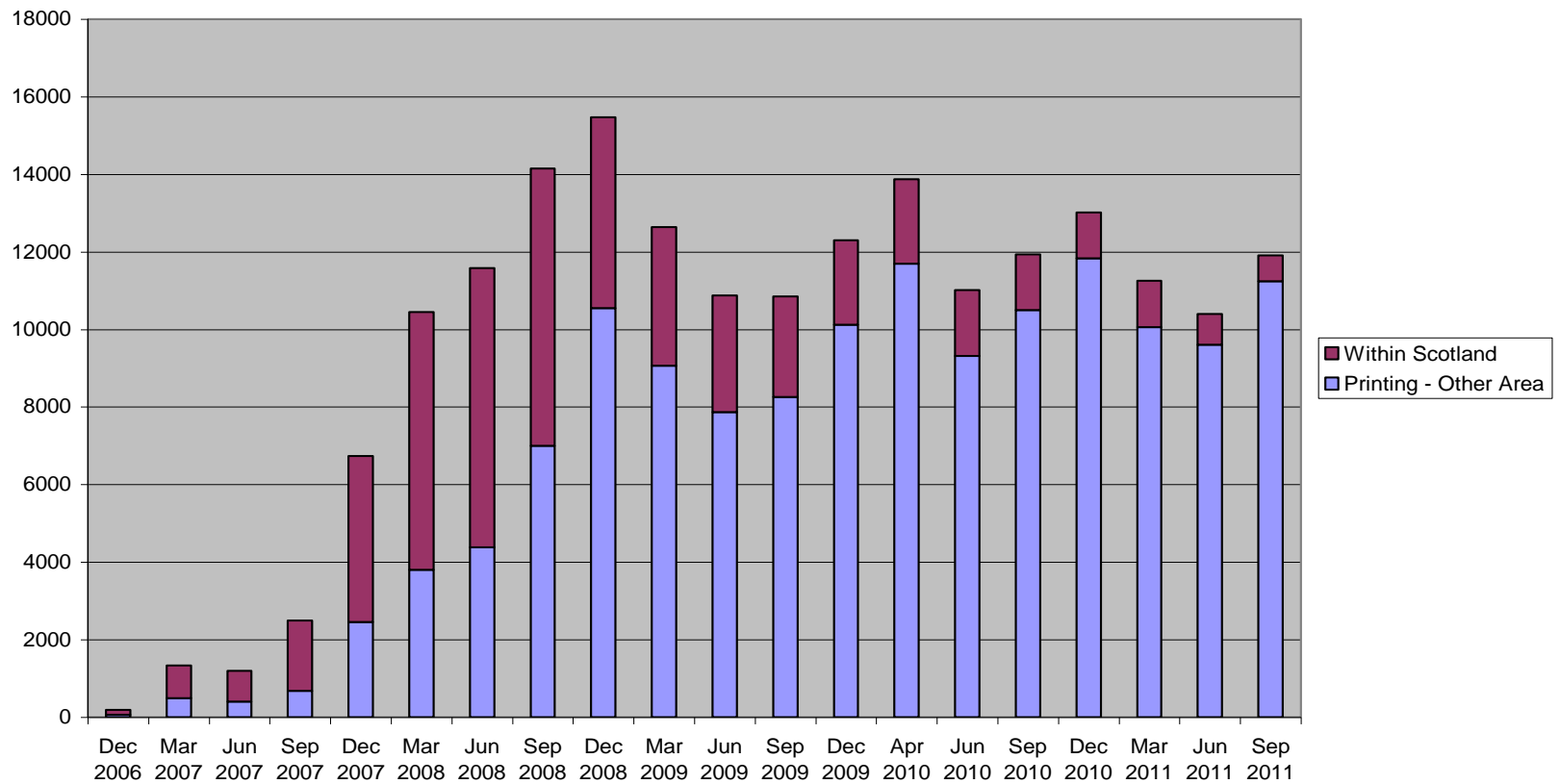
- ✓ 2% practices in Scotland not connected
- ✓ Outbound to rest of UK

- ✓ ***Inbound scanning demand***

- ✓ 2% of practices in Scotland not connected
- ✓ (re)scanning demand on practices from rest of UK

# Printing demand

## Docman Printing

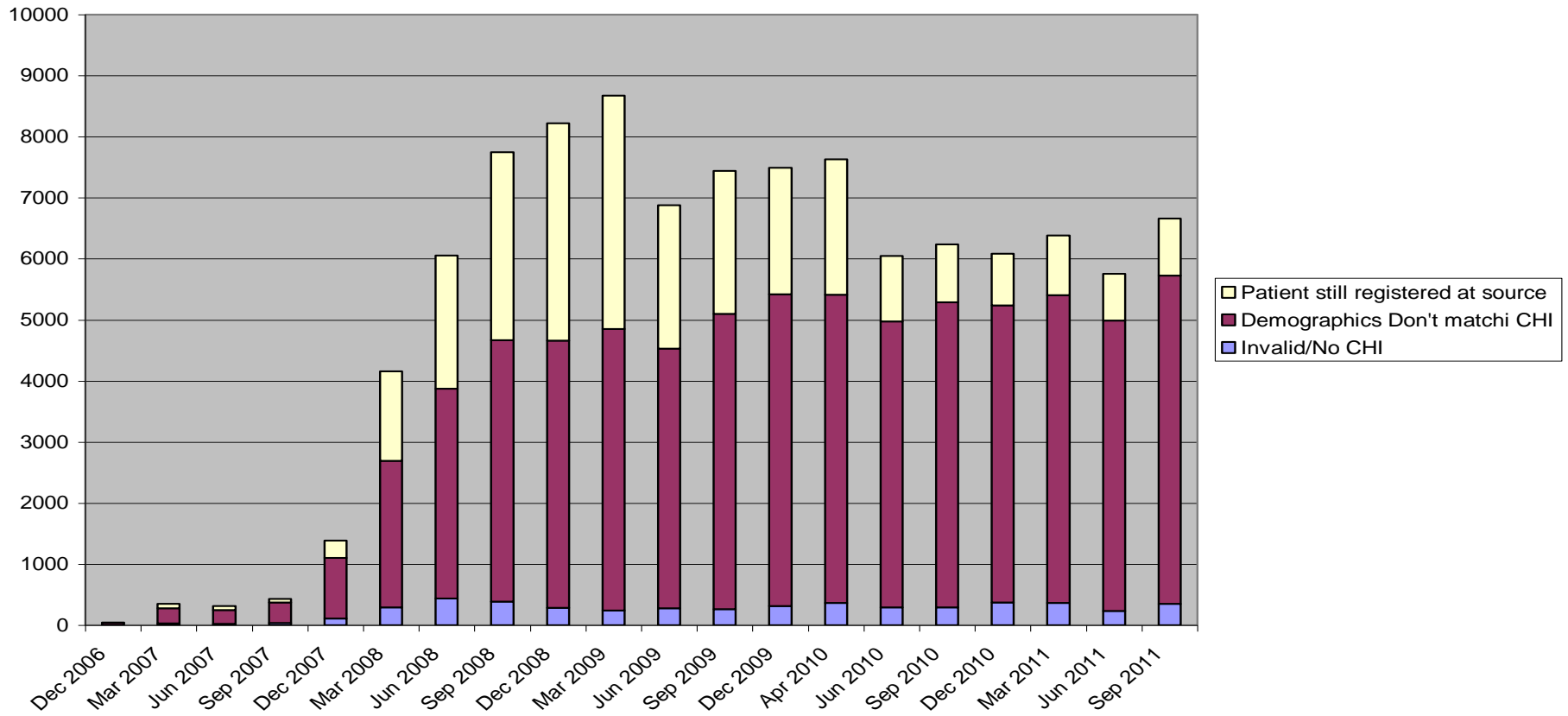


# ***Current challenges (2)***

- ✓ ***Invalid/problem file types***
- ✓ ***MicroTech support call levels***
- ✓ ***Computer virus transmission***
- ✓ ***Storage volumes***
- ✓ ***High volume of exceptions***
- ✓ ***Reliance on knowledge of the few in Practices***

# Exceptions

Exceptions Breakdown





# ***2011/12 business plan***

- ✓ ***Focus on 2% of practices as they migrate from GPASS***
- ✓ ***Implement Acceptable file list***
- ✓ ***Robust processes for destruction from long term storage***
- ✓ ***Same day Partners registration***
  - ✓ CHI release January 2012
- ✓ ***Achieve new LDP targets***
  - ✓ Develop GP practice level reporting and outliers
- ✓ ***Review exception handling business rules***

# ***LDP targets (to 2011/12)***

- ✓ ***99% of registration updates within 7 days***
- ✓ ***80% of paper records transferred within 6 weeks***
- ✓ ***90% of electronic records transferred within 2 weeks***
- ✓ ***All “end to end”***
  - ✓ Needs new and old practices to do their bit in good time
- ✓ ***Agreed with SGHD and SGPC***

# ***Summary – achievements by end of 2011/12***

- ✓ ***98% of GP practices in Scotland connected to transfer network***
- ✓ ***400,000 electronic record transfers each year – more than 1.2 million since we started***
- ✓ ***Target 90% of electronic records transferred in 2 weeks as opposed to 90% of paper records taking six weeks***
  - ✓ better information to new GP = better patient safety since GP has record sooner
  - ✓ less time taken = better efficiency
  - ✓ 81% achievement by September 2011
- ✓ ***Possible to complete transfer of records to new practice on same working day from January 2012***
- ✓ ***All babies born and immigrants from outwith UK for the last few years have only an electronic record***
- ✓ ***Freeing up space in general practice for more clinical use***

***GP2GP***  
***Programme in***  
***England***

# GP2GP Implementation Phase

- February 2005 – commence
- Iterative Lab Testing:
  - Export to Message
  - A-B Homogeneous
  - A-B Heterogeneous
  - A-B-C Heterogeneous
- Real Patient Testing (From July 2005)
  - Export
  - A-B Homogeneous
- Homogeneous A-B Deployment (V1.0) Autumn 2005
- Heterogeneous A-B-C Deployment (V1.1) Spring 2007

# Current State of Play

- >5200 Practices enabled (56%)
- Almost 2m records transferred
- EMIS LV, Vision 3, EMISWeb enabled
- iSoft Synergy set to roll out
- Microtest/TPP in testing phase
- Revised Specification Agreed (A-B-A)
  - Heuristic Clinical Statement Matching Rules
  - GUID Preservation Rules
  - Archetypes for Allergy/BP/Document Metadata

# Still to do

- Document Interoperability (Names)
- Allergy Interoperability
- BP Interoperability
- PMIP Interoperability
- Code Translation Sets  
(ReadV2/CTV3/SNOMED)
- Qualifier Formalisation (SNOMED)
- Increase “Turn-on”

# ***What next for Scotland?***



# ***Vision***

- ✓ ***Transfer of full electronic patient record between GP practices, throughout the UK, linked to the patient registration process, which preserves the integrity and the clinical value of the record and completes the record transfer in a safe, secure and timely manner***

# ***So how do we get there?***

✓ ***Lots of tactical things we could do***

✓ Temp residents, OOH etc

✓ ***....but.....***

✓ ***Three key strategic decisions***

✓ Message

✓ Transfer method

✓ Patient locator service

# ***Message***

- ✓ ***England HL7 with in-line attachments***
- ✓ ***Scotland attachments in DocMan folder structure + clinical summary pdf***
- ✓ ***Options***
  - ✓ Scotland full HL7 message
  - ✓ Scotland HL7 message without attachments; keep them in DocMan folder structure
  - ✓ Some sort of mix
- ✓ ***Agreement on UK acceptable file types for attachments and other standards***

# ***Transfer method***

- ✓ ***England SPINE***
- ✓ ***Scotland DocMan Transfer/eLinks***
- ✓ ***Options***
  - ✓ Leverage DocMan Transfer service
    - ✓ Message added to existing flow/processes
    - ✓ Same or different controls
  - ✓ “Supplier-led” service
    - ✓ Implementation of MIG (no SPINE in Scotland)
    - ✓ Replace DocMan Transfer service

# ***Patient locator***

- ✓ ***England PDS***
- ✓ ***Scotland CHI***
- ✓ ***Options***
  - ✓ Existing/future CHI demographic service
  - ✓ EMISWeb/Vision360 hub(s)

# ***Interactive session***

- ✓ ***Two groups***

- ✓ ***Group One***

- ✓ Home grown

- ✓ Scotland HL7+DocMan folder

- ✓ Leverage DocMan Transfer service

- ✓ CHI current or future

- ✓ ***Group Two***

- ✓ England/supplier led

- ✓ HL7 with no DocMan folder

- ✓ Supplier MIG service

- ✓ Single/multiple EMISWeb/Vision360 hubs

# ***Outputs***

- ✓ ***Strengths***
- ✓ ***Weaknesses***
- ✓ ***Opportunities***
- ✓ ***Threats***
- ✓ ***Issues***
- ✓ ***Risks***
- ✓ ***Benefits***